

# HAND-HELD-BOXES 测量仪器盒

## 封装测量仪器的手持盒

成熟和实惠的口袋格式的手持盒。

- 预备好安装数字和模拟显示器
- 屏板保护显示器，使用粘膜使安装简单
- 适配 C、AA 和 9V 电池的电池仓
- 卡夹式电池盒盖使电池更换快捷
- 机盒无/有开关摇杆（类型 P）
- 机盒下部前面上的凸起用于连接器安装
- 倾斜放置架达到符合人体工程学的视角
- 操作区域凹陷，以保护膜键盘（类型 M, N）
- 固定柱用于安装电路板和安装组件



# HAND-HELD-BOXES 测量仪器盒

## 应用示例

- 用于安装数字和模拟显示器的实用手持盒
- 在测量和控制工程应用广泛，例如使用于电流与电压测试仪、电场强度计，数字温度计等



Dosemeter

## 按客户要求修改加工

如何体现您的特殊产品？如有需要，我们执行所有必要的修改和精加工，提供组装完毕的机盒。  
产品类型用于 Hand-Held-Boxes 测量仪器盒



机械加工



表面涂渡



图文打印



激光打印字体



装饰膜



特殊材质



EMC 保护



制备 / 组装

## 类型



A9060007  
HAND-HELD-BOX P, Vers. I  
ABS (UL 94 HB)  
off-white RAL 9002  
145x80x36.5mm



A9060009  
HAND-HELD-BOX P, Vers. I  
ABS (UL 94 HB)  
black RAL 9005  
145x80x36.5mm

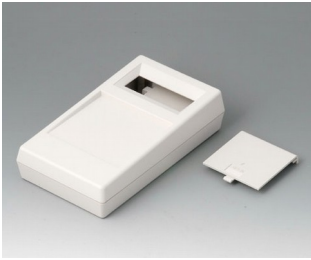


A9060017  
HAND-HELD-BOX P, Vers. II  
ABS (UL 94 HB)  
off-white RAL 9002  
145x80x36.5mm



A9060019  
HAND-HELD-BOX P, Vers. II  
ABS (UL 94 HB)  
black RAL 9005  
145x80x36.5mm

# HAND-HELD-BOXES 测量仪器盒



**A9061017**  
HAND-HELD-BOX N, Vers. I  
ABS (UL 94 HB)  
off-white RAL 9002  
180x100x44mm



**A9061019**  
HAND-HELD-BOX N, Vers. I  
ABS (UL 94 HB)  
black RAL 9005  
180x100x44mm



**A9061117**  
HAND-HELD-BOX N, Vers. II  
ABS (UL 94 HB)  
off-white RAL 9002  
180x100x44mm



**A9061119**  
HAND-HELD-BOX N, Vers. II  
ABS (UL 94 HB)  
black RAL 9005  
180x100x44mm

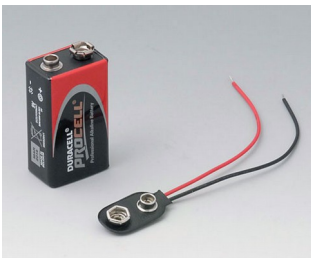


**A9062017**  
HAND-HELD-BOX M, Vers. I  
ABS (UL 94 HB)  
off-white RAL 9002  
145x80x38.5mm



**A9062019**  
HAND-HELD-BOX M, Vers. I  
ABS (UL 94 HB)  
black RAL 9005  
145x80x38.5mm

## “电池” 配件



**A9160003**  
Plug-in contact, 1 x 9 V (PP3)



**A9190013**  
Set of battery clips, 4 x AA  
Steel  
nickel-plated

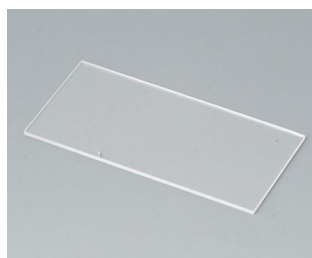


**A9250250**  
Battery spacer  
PE foam  
50x25x4mm

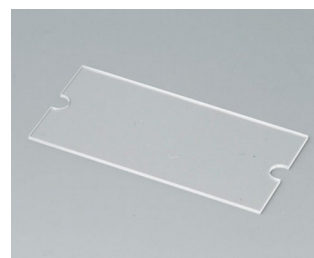
## “保护等级” 附件



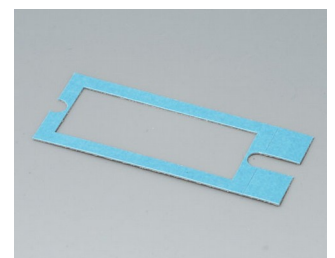
**A9160002**  
Cover plug  
black RAL 9005



**A9160004**  
Display window P  
Acrylglas  
transparent  
60x30x1mm

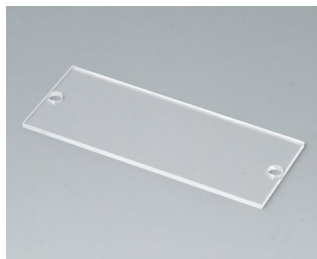


**A9160005**  
Display window M  
Acrylglas  
transparent  
60x30x1mm

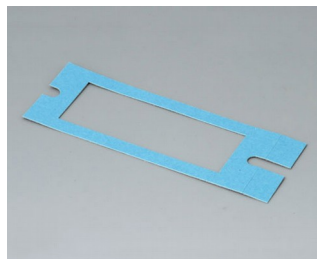


**A9160006**  
Adhesive foil P/M

# HAND-HELD-BOXES 测量仪器盒



**A9161004**  
Display window N  
Acrylglas  
transparent  
90x36x2mm



**A9161005**  
Adhesive foil N

## “手提” 盒附件



**A9100002**  
Ring eyelet  
PA 6  
volcano

## “螺钉” 附件



**A0305031**  
Self-tapping screws 2.5 x 6 mm  
(PZ1)



**A0306031**  
Self-tapping screws 3 x 6 mm  
(PZ1)

## 附件



**A9160007**  
Switch cap  
ABS (UL 94 HB)  
off-white RAL 9002



**A9160009**  
Switch cap  
PA  
black RAL 9005



**A9210290**  
Anti-slide feet 9.5 x 3.8 mm  
transparent



**A9250807**  
Tilt foot bar  
ABS (UL 94 HB)  
off-white RAL 9002

# HAND-HELD-BOXES 测量仪器盒



**A9250809**  
Tilt foot bar  
ABS (UL 94 HB)  
black RAL 9005



**A9250817**  
Tilt foot bar  
ABS (UL 94 HB)  
off-white RAL 9002



**A9250819**  
Tilt foot bar  
ABS (UL 94 HB)  
black RAL 9005



**A9361009**  
Tilt foot bar  
Steel  
chromed

保留技术更改可能性。© OKW 机箱系统, Buchen/德国。