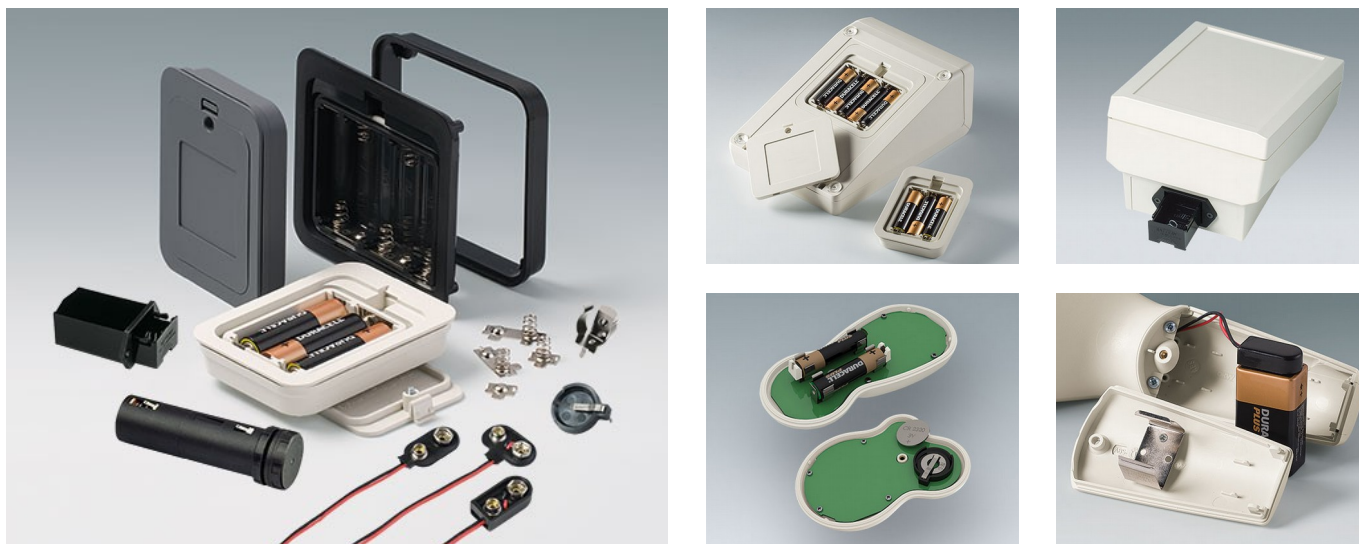


电池盒、电池架、钮扣电池支架

- 用于安装 AAA、AA、C 和 9V 电池的通用电池盒和电池架，用于直接安装在前面板或机盒内壁上。
- 用于安装在电路板上的钮扣电池支架。



按客户要求修改加工

如何体现您的特殊产品？如有需要，我们执行所有必要的修改和精加工，提供组装完毕的机盒。
产品类型用于 电池盒、电池架、钮扣电池支架



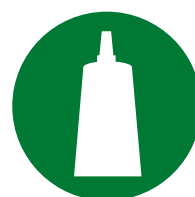
机械加工



图文打印



激光打印字体



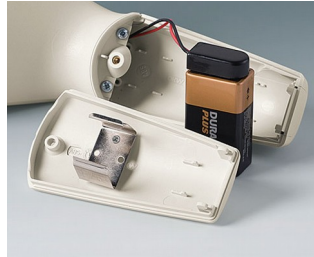
制备 / 组装

电池盒、电池架、钮扣电池支架

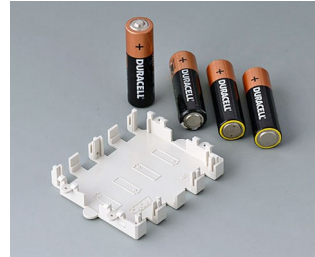
类型



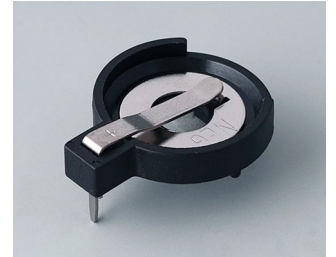
A9156001
Battery holder, 2 x AA
PP
black RAL 9005



A9156003
Battery holder, 1 x 9 V (PP3)
Steel
nickel-plated



A9174004
Battery compartment, 4 x AA
ABS (UL 94 HB)
off-white RAL 9002



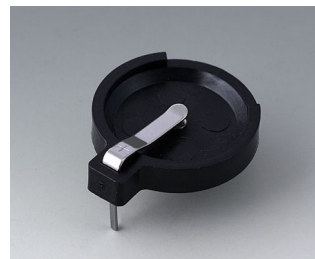
A9193037
Button cell holder, Ø 20 mm



A9193038
Button cell holder, Ø 23 mm



A9193039
Button cell holder, Ø 12 mm



A9193040
Button cell holder, Ø 16 mm



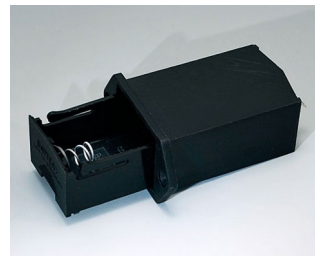
A9250250
Battery spacer
PE foam
50x25x4mm



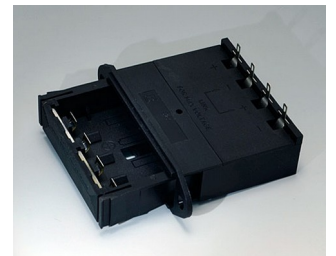
A9250251
Battery spacer
PE foam
50x25x3mm



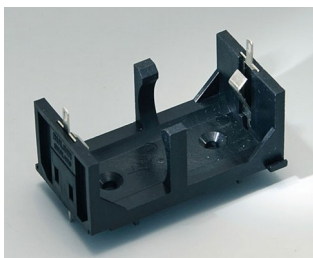
A9301330
Battery holder, 3 x AA
PA
black RAL 9005



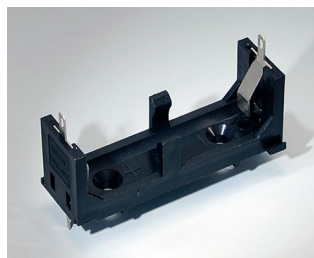
A9302510
Battery holder, 1 x 9 V (PP3)
PA
black RAL 9005



A9302540
Battery holder, 4 x AA
PA
black RAL 9005



A9303210
Battery holder, 1 x C
PA
black RAL 9005



A9303310
Battery holder, 1 x AA
PA
black RAL 9005



A9336117
Battery compartment kit, 3 x AA
ABS (UL 94 HB)
off-white RAL 9002
93x69mm
IP 54



A9336118
Battery compartment kit, 3 x AA
ABS (UL 94 HB)
lava
93x69mm
IP 54

电池盒、电池架、钮扣电池支架



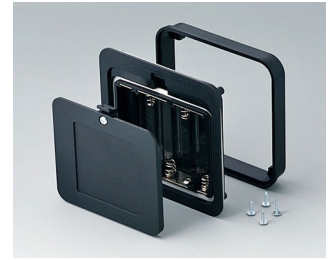
A9336119
Battery compartment kit, 3 x AA
ABS (UL 94 HB)
black RAL 9005
93x69mm
IP 54



A9338117
Battery compartment kit, 5 x AA
ABS (UL 94 HB)
off-white RAL 9002
93x98mm
IP 54



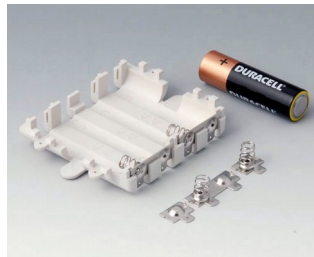
A9338118
Battery compartment kit, 5 x AA
ABS (UL 94 HB)
lava
93x98mm
IP 54



A9338119
Battery compartment kit, 5 x AA
ABS (UL 94 HB)
black RAL 9005
93x98mm
IP 54

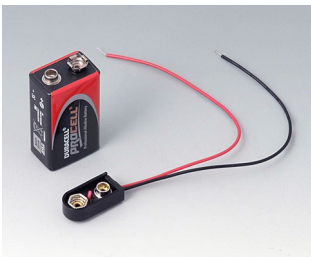


A9338218
Battery compartment kit, 5 x AA
ASA+PC (UL 94 V-0)
lava
93x98mm
IP 54



A9345217
Set of battery compartment, 4 x
AA
ABS (UL 94 HB)
off-white RAL 9002

“电池” 配件



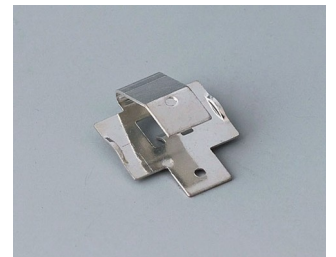
A9156002
Plug-in contact, 1 x 9 V (PP3)



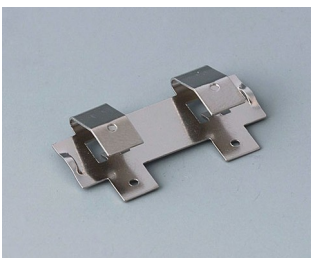
A9161001
Set of battery clips, 4 x AA
Steel
tin-plated



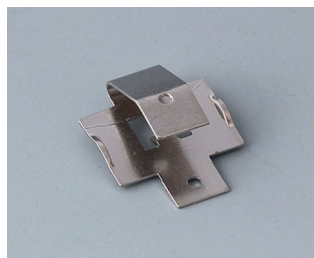
A9193003
Battery-clips, double contact
Steel
tin-plated



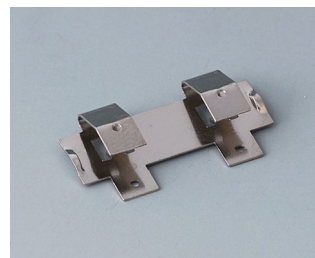
A9193004
Battery-clips, single contact
Steel
tin-plated



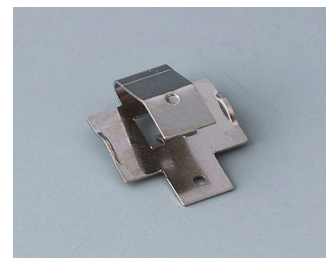
A9193005
Battery clips, double contact
Steel
nickel-plated



A9193006
Battery-clips, single contact
Steel
nickel-plated



A9193008
Battery clips, double contact
CuBe
nickel-plated



A9193009
Battery clips, single contact
CuBe
nickel-plated