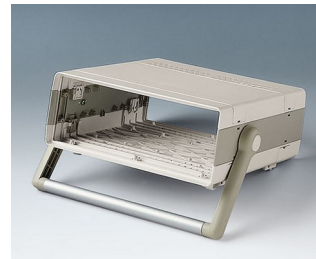
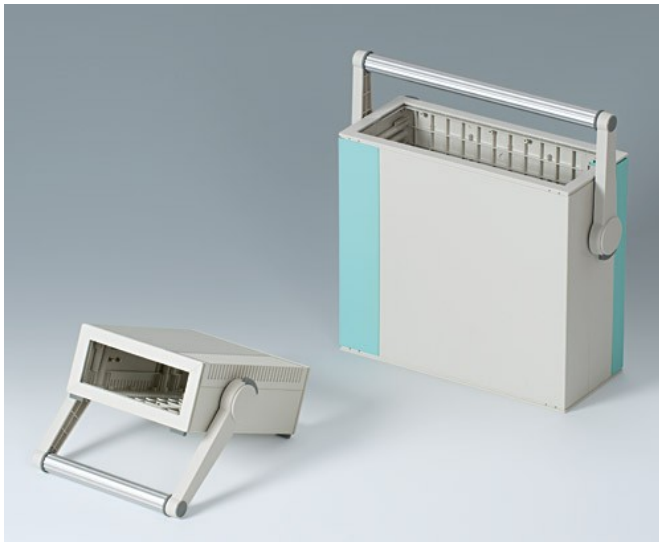


手柄

旋转提手或安装支架由塑料制成。相匹配的适配机盒宽度的阳极氧化铝套管作为单独的销售件。



按客户要求修改加工

如何体现您的特殊产品？如有需要，我们执行所有必要的修改和精加工，提供组装完毕的机盒。
产品类型用于 手柄



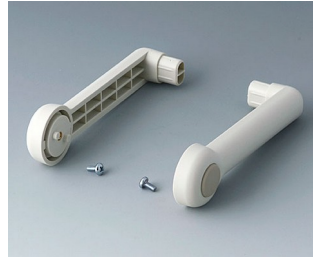
图文打印

手柄

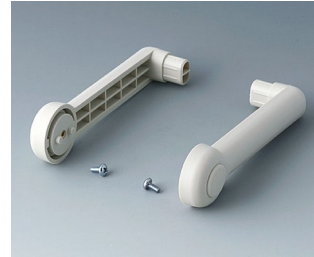
类型



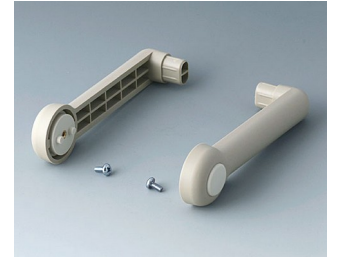
A9300015
Side arm kit
PA 6 (UL 94 HB)
black RAL 9005



A9300016
Side arm kit
PA 6
off-white RAL 9002



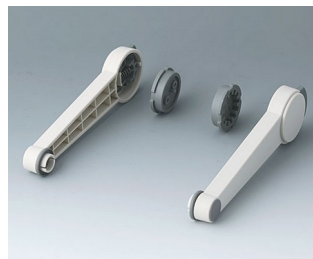
A9300017
Side arm kit
PA 6
off-white RAL 9002



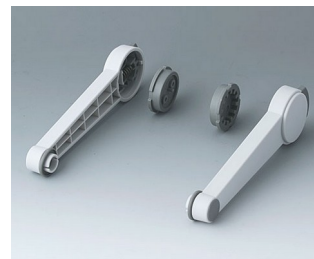
A9300018
Side arm kit
PA 6
pebble grey RAL 7032



A9300522
Side arm kit
PA 6 (UL 94 HB)
black RAL 9005



A9300722
Side arm kit
PA 6
off-white RAL 9002



A9300822
Side arm kit
PA 6
light grey RAL 7035

保留技术更改可能性。© OKW 机盒系统, Buchen/德国。