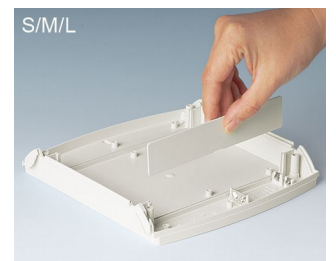


DIATEC

Attractive low profile plastic enclosures

These highly attractive enclosures are especially suitable for living and working environments – ideal for communication and network equipment.

- modern, flat enclosure design for wall mounted and desktop electronics
- central control panel for mounting a keypad, touch screen or display unit
- recessed area for installation and protection of interfaces, plug-in connections, cable glands etc.
- easy, invisible wall mounting; knockouts in base for wall fixings
- four sizes in two colours
- **DIATEC XS:** two-piece case, consisting of a top and bottom part, screwed together with Torx T10 stainless steel screws, integrated battery holder for 2 x AA, pre-shaped flush-mounting box contoured in the bottom part
- **DIATEC S, M, L:** four-piece case, consisting of a top and bottom part as well as two covers for concealing the assembly screws; if required, the snap-on covers can be locked to prevent unauthorised access; integrated battery compartment for 2 x AA or 1 x 9 V
- slot-in panels (accessories) can be used to separate the electronics and terminal areas
- protection class IP 40
- snap-on side panels allow installation without disassembly of the top panel (S, M, L)
- hinged lids in solid ABS, and translucent or transparent polycarbonate (accessories S, M, L)
- internal screw pillars for mounting PCBs



DIATEC

Applications and Examples

- Peripheral equipment for computers
- IoT/IIoT
- Gateways
- Data system engineering
- Systems for data collection on the job
- Access and security controls
- Measuring and controlling devices
- Medical, wellness and laboratory technology



Control panel for home automation



Control unit for photovoltaic solar installations



Controller for intelligent tank management



House control unit



Indoor air quality control



Multi-functional terminal



Solar Control Panel



Systems for drying brickwork



WBA receiver unit for measuring biosignals



Weather Monitoring Station

Customising Options

What do you still need for your own very personal product? We can supply enclosures and tuning knobs with all necessary modifications for fitting your electronic components. Customising options for Diatec

DIATEC



Machining



Lacquering



Printing



Laser marking



Decor foils



Special material



EMC shielding



Installation / Assembly
of accessories

Select Versions



A9092107
DIATEC XS
ABS (UL 94 HB)
off-white RAL 9002
150x37x155mm
IP 40



A9092108
DIATEC XS
ABS (UL 94 HB)
lava
150x37x155mm
IP 40



A9093107
DIATEC S
ABS (UL 94 HB)
off-white RAL 9002
210x48x200mm
IP 40



A9093108
DIATEC S
ABS (UL 94 HB)
lava
210x48x200mm
IP 40



A9094107
DIATEC M
ABS (UL 94 HB)
off-white RAL 9002
270x48x200mm
IP 40



A9094108
DIATEC M
ABS (UL 94 HB)
lava
270x48x200mm
IP 40

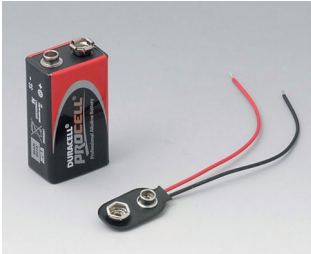


A9095107
DIATEC L
ABS (UL 94 HB)
off-white RAL 9002
330x48x200mm
IP 40



A9095108
DIATEC L
ABS (UL 94 HB)
lava
330x48x200mm
IP 40

Accessory "battery"



A9160003
Plug-in contact, 1 x 9 V (PP3)



A9190002
Set of battery clips,
2xN/2xAA/2xAAA
Steel
tin-plated

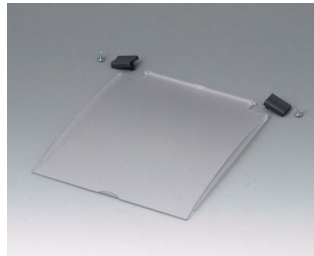


A9190015
Set of battery clips, 2 x AA
Steel
nickel-plated

Accessory "protection"



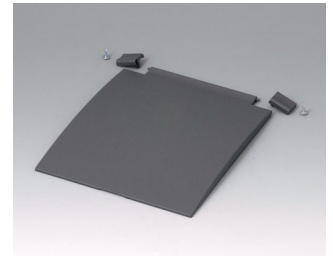
A9193121
Hinged lid S, L
PC (UL 94 V-0)
translucent



A9193122
Hinged lid S, L
PC (UL 94 V-0)
translucent



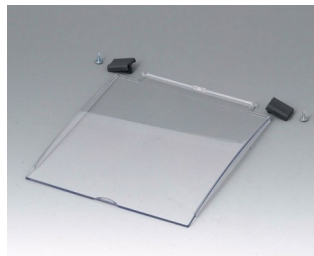
A9193127
Hinged lid S, L
ABS (UL 94 HB)
off-white RAL 9002



A9193128
Hinged lid S, L
ABS (UL 94 HB)
lava



A9193131
Hinged lid S, L
PC (UL 94 V-0)
clear



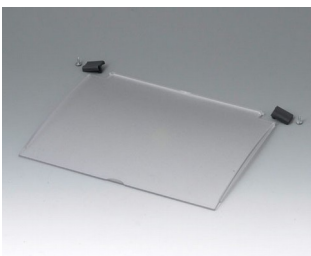
A9193132
Hinged lid S, L
PC (UL 94 V-0)
clear



A9194007
Slot-in panel
ABS (UL 94 HB)
off-white RAL 9002
156x30x3mm



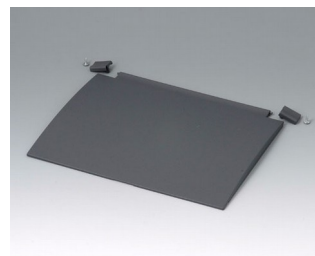
A9194121
Hinged lid M
PC (UL 94 V-0)
translucent



A9194122
Hinged lid M
PC (UL 94 V-0)
translucent



A9194127
Hinged lid M
ABS (UL 94 HB)
off-white RAL 9002

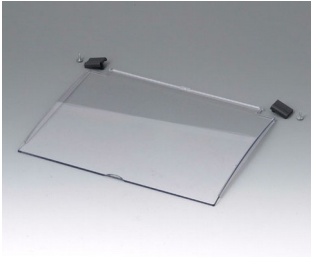


A9194128
Hinged lid M
ABS (UL 94 HB)
lava



A9194131
Hinged lid M
PC (UL 94 V-0)
clear

DIATEC



A9194132
Hinged lid M
PC (UL 94 V-0)
clear

Accessory "wall/holder"



B1360048
Wall suspension elements
ABS (UL 94 HB)
pebble grey RAL 7032

Accessory "screws"



A0306031
Self-tapping screws 3 x 6 mm
(PZ1)



A0399T10
Torx T10 screwdriver

Accessory



A9207150
Anti-slide feet 6.5 x 2 mm
transparent



A9212330
Anti-slide feet 12 x 3.5 mm
transparent

Subject to technical modification without notice. © by OKW Gehäusesysteme, Buchen/Germany.