

# SMART-TERMINAL

## Sophisticated aluminium profile enclosures for central control units

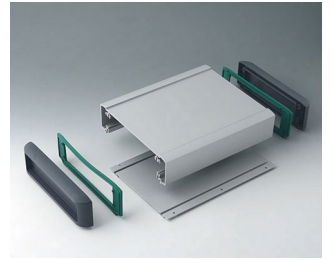
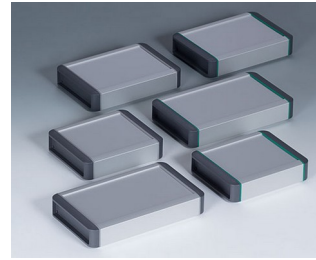
Our new SMART-TERMINAL aluminium profile enclosures feature a highly quality matt anodised finish. These robust, elegant and highly attractive cases offer plenty of space for large-volume electronic assemblies, for example touch screens, display modules, PCBs etc. A variety of technical advantages, individual profile lengths on request, and creative designer options make the SMART-TERMINAL the last word in excellence for tough industrial display enclosures.

- 3 basic enclosures in the profile lengths 160 mm, 200 mm and 240 mm (overall enclosure length with end covers + 42 mm or with end plates + 4 mm), width 170 mm, height 50 mm
- covers in lava (similar to anthracite) moulded in high-quality ASA+PC-FR plastic
- designer seals made of TPV material in volcano or green
- optionally available with a simple aluminium plate as a lateral end plate
- highly versatile design can be used as table-top, sloping front and wall-mounted enclosures
- recessed area in top for the installation and protection of displays, membrane keypads and operating elements  
(SMART-TERMINAL 160: 5.7"/14 cm; SMART-TERMINAL 200 & 240: 7"/17.8 cm)
- horizontal PCB guides and screw channels inside the enclosure
- two-part aluminium profile facilitates the assembly of the enclosure and installation of the components, with no visible fixing screws
- flat areas for easy installation of the interfaces
- side covers with recessed area to protect the cables and connectors
- optional accessories: wall suspension element, case canting kit for an ergonomic reading angle of 12°, set of square-head nuts for PCB mounting

### **Special sizes and versions**

- individual profile lengths to customer specification - please ask for a quote
- on request, designer seals and covers in other colours as creative/visual features, minimum order quantity 200 pcs
- Bracket according to VESA standard for the SMART-TERMINAL on request

# SMART-TERMINAL



# SMART-TERMINAL

## Applications and Examples

- Peripheral and interface equipment
- Office
- Communications technology
- Safety engineering
- Biometrics
- Medical and laboratory technology
- Health care
- Automation
- Smart Factory
- Industry 4.0
- Gateways
- Measurement and control engineering



Industrial Secure Gateway



Information terminal at the point of sale



ISOBUS terminal for tractors and self-propelled machines



Logistics terminal



Machine real-time monitoring system



Mobile diagnostic device for machines and plants



Multi-touch panel for machine control



Plant research terminal



Process control of plants



Smart meter for wind power and solar systems



Surveillance monitor for vital signs



Testing of electronic components

## Customising Options

What do you still need for your own very personal product? We can supply enclosures and tuning knobs with all necessary modifications for fitting your electronic components.  
Customising options for Smart-Terminal

# SMART-TERMINAL



Machining



Lacquering



Printing



Laser marking



Decor foils



EMC shielding



Installation / Assembly  
of accessories

## Select Versions



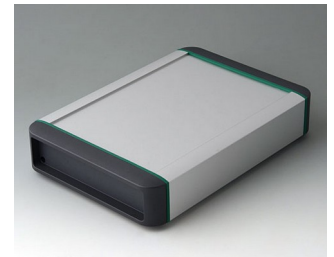
**B3407011**  
SMART-TERMINAL 160  
Aluminium AlMgSi 0.5  
matt anodised  
202x170x50mm  
IP 54



**B3407012**  
SMART-TERMINAL 160  
Aluminium AlMgSi 0.5  
matt anodised  
202x170x50mm  
IP 54



**B3407013**  
SMART-TERMINAL 160  
Aluminium AlMgSi 0.5  
matt anodised  
164x170x50mm



**B3407021**  
SMART-TERMINAL 200  
Aluminium AlMgSi 0.5  
matt anodised  
242x170x50mm  
IP 54



**B3407022**  
SMART-TERMINAL 200  
Aluminium AlMgSi 0.5  
matt anodised  
242x170x50mm  
IP 54



**B3407023**  
SMART-TERMINAL 200  
Aluminium AlMgSi 0.5  
matt anodised  
204x170x50mm



**B3407031**  
SMART-TERMINAL 240  
Aluminium AlMgSi 0.5  
matt anodised  
282x170x50mm  
IP 54



**B3407032**  
SMART-TERMINAL 240  
Aluminium AlMgSi 0.5  
matt anodised  
282x170x50mm  
IP 54

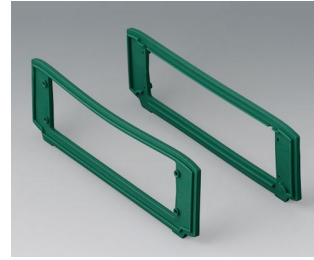
# SMART-TERMINAL



**B3407033**  
SMART-TERMINAL 240  
Aluminium AlMgSi 0.5  
matt anodised  
244x170x50mm



**B3507011**  
Side covers set  
ASA+PC (UL 94 V-0)  
lava



**B3507016**  
Designer seals set, green  
TPV 50A  
green

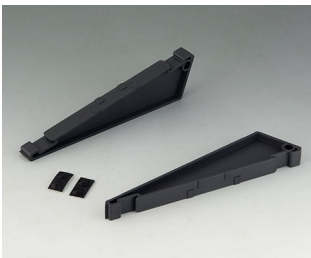


**B3507017**  
Designer seals set, volcano  
TPV 50A  
volcano



**B3507025**  
Aluminium end plate  
Aluminium  
matt anodised

## Accessory "station"



**B3507030**  
Case canting kit  
ASA+PC (UL 94 V-0)  
lava

## Accessory "wall/holder"



**B3507020**  
Wall suspension element  
Aluminium

# SMART-TERMINAL

## Accessory "screws"



**A0330080**  
Screw M3 x 8 mm (T10)  
Stainless steel



**B3500001**  
Set of M3 square-head nuts  
Steel

## Accessory



**A9209229**  
Anti-slide feet 8.5 x 2.2 mm  
black

Subject to technical modification without notice. © by OKW Gehäusesysteme, Buchen/Germany.