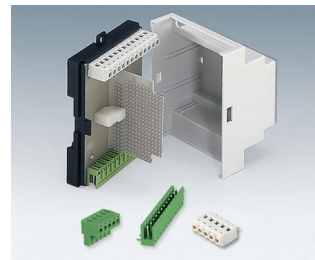
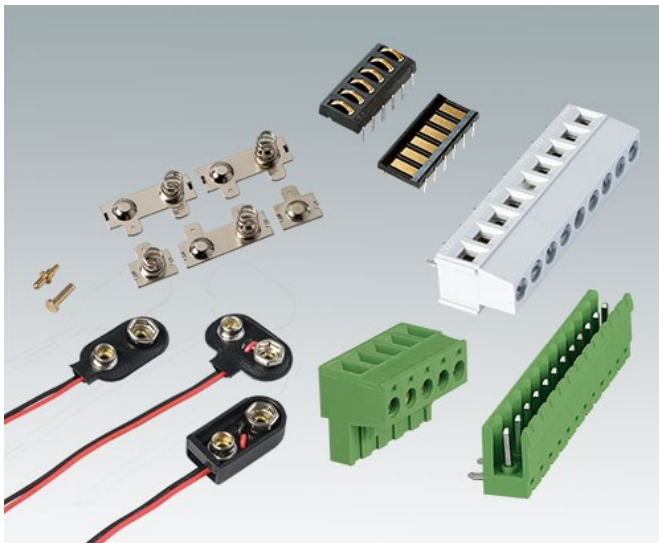
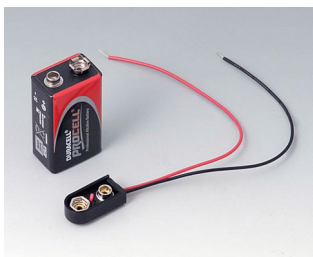


CONTACTS, CONNECTIONS

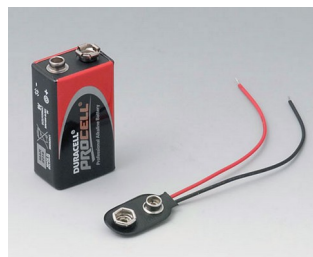
- We offer a range of contacts for cordless energy and data transmission. The gold-plated surfaces are highly conductive and corrosion-resistant, thus guaranteeing secure and reliable connection between the enclosures and station/holder.
- The OKW range already includes a selection enclosures, stations and holders with pre-moulded apertures for fitting these contacts. In this way, the user can charge batteries in the device and then transmit data wirelessly in the field – ideal for mobile communication equipment!
- Huge range of battery clips, suitable for OKW enclosures.
- Different terminal blocks and plug headers.



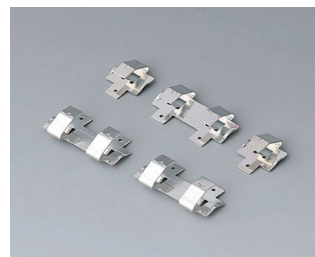
Select Versions



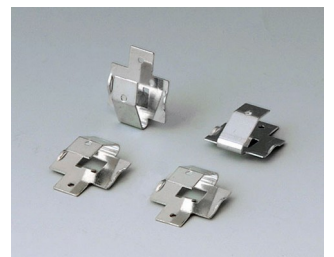
A9156002
Plug-in contact, 1 x 9 V (PP3)



A9160003
Plug-in contact, 1 x 9 V (PP3)



A9161001
Set of battery clips, 4 x AA
Steel
tin-plated



A9161002
Set of battery clips, 2 x 9 V or 4 x AA
Steel
tin-plated

CONTACTS, CONNECTIONS



A9174006
Set of battery clips, 1 x 9 V
Steel
tin-plated



A9190002
Set of battery clips,
2xN/2xAA/2xAAA
Steel
tin-plated



A9190003
Set of battery clips,
2xN/2xAA/2xAAA
Steel
nickel-plated



A9190010
Set of battery clips, 4 x AA
Steel
nickel-plated



A9190011
Set of battery clips, 2 x AA
Steel
nickel-plated



A9190012
Set of battery clips, 4 x AA
Steel
nickel-plated



A9190013
Set of battery clips, 4 x AA
Steel
nickel-plated



A9190014
Set of battery clips, 2 x AA
Steel
nickel-plated



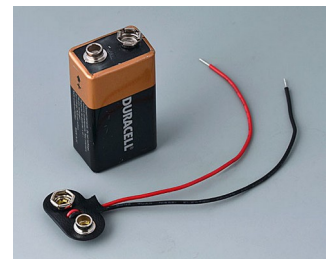
A9190015
Set of battery clips, 2 x AA
Steel
nickel-plated



A9190023
Set of battery clips, 3 x AA
Steel
nickel-plated



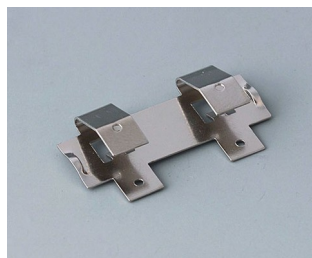
A9190024
Set of battery clips, 3 x AAA
Steel
nickel-plated



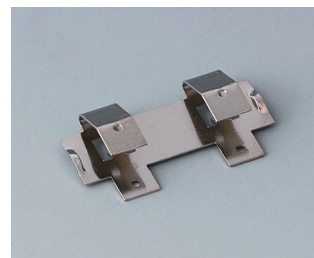
A9193002
Plug-in contacts, 1 x 9 V (PP3)



A9193003
Battery-clips, double contact
Steel
tin-plated



A9193005
Battery clips, double contact
Steel
nickel-plated



A9193008
Battery clips, double contact
CuBe
nickel-plated



A9193013
Battery-clips, double contact
Steel
nickel-plated

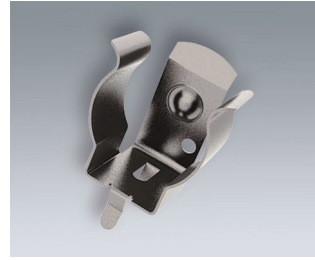
CONTACTS, CONNECTIONS



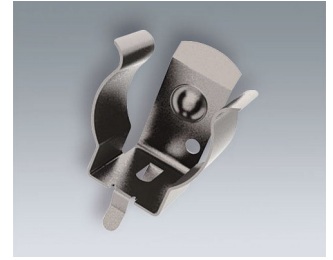
A9193014
Battery-clips, double contact
Steel
nickel-plated



A9193030
Contact pin
gold-plated



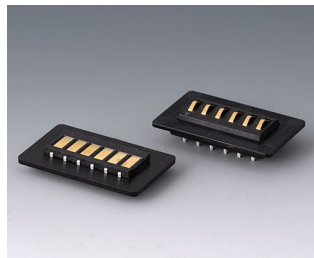
A9193035
Battery clip, AA
Steel
nickel-plated



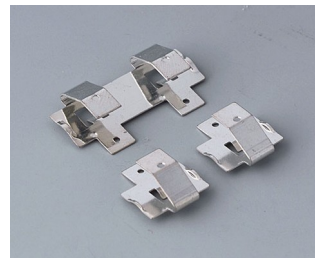
A9193036
Battery clip, AAA
Steel
nickel-plated



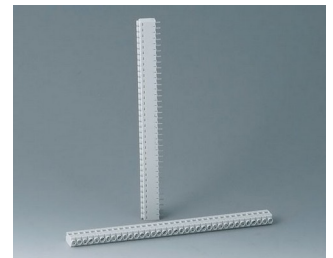
A9193042
Mounting plates for contacts
ABS (UL 94 HB)
black RAL 9005



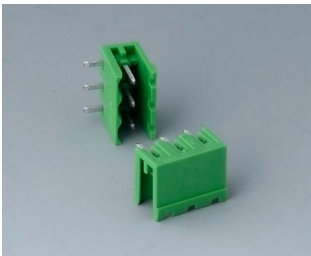
A9193044
Contacting kit, 6-pin
ABS (UL 94 HB)
black RAL 9005



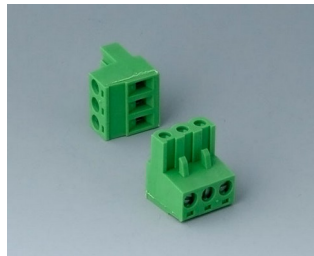
A9194001
Set of battery clips, 2 x AA
Steel
tin-plated



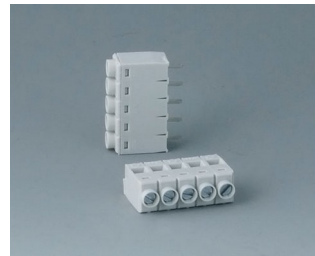
B6600111
Terminal block, block 5.0
PA 68 (UL 94 V-0)
light grey



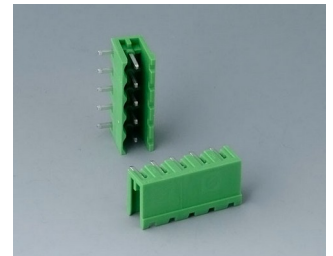
B6600222
Plug header, block 5.08
PA 68 (UL 94 V-0)



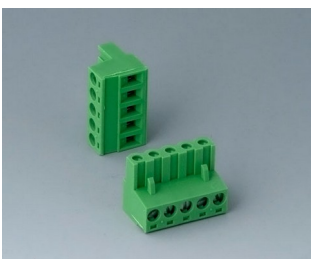
B6600223
Plug header, block 5.08
PA 68 (UL 94 V-0)



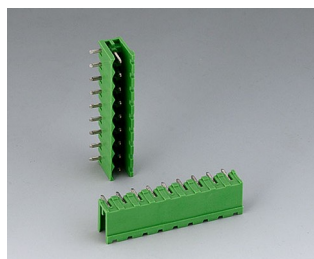
B6601111
Terminal block, block 5.0
PA 68 (UL 94 V-0)



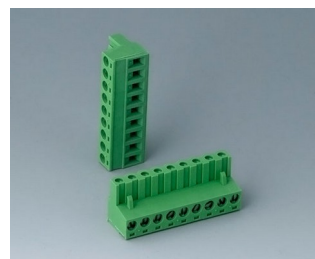
B6601222
Plug header, block 5.08
PA 6 (UL 94 V-0)



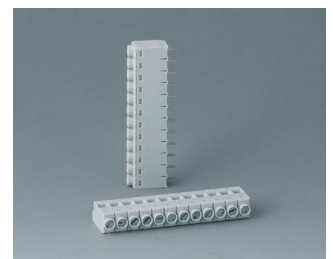
B6601223
Plug header, block 5.08
PA 6 (UL 94 V-0)



B6602222
Plug header, block 5.08
PA 6 (UL 94 V-0)

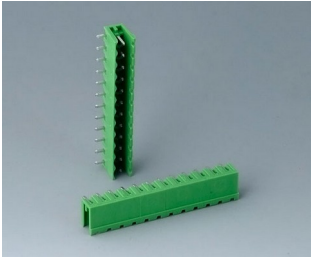


B6602223
Plug header, block 5.08
PA 6 (UL 94 V-0)

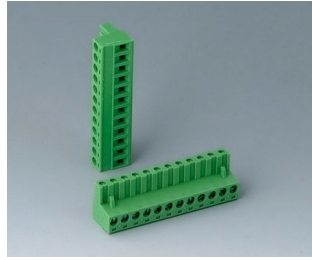


B6603111
Terminal block, block 5.0
PA 68 (UL 94 V-0)

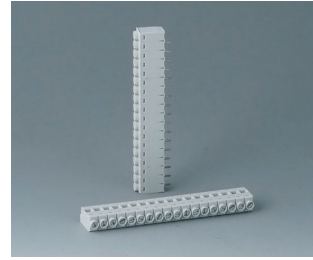
CONTACTS, CONNECTIONS



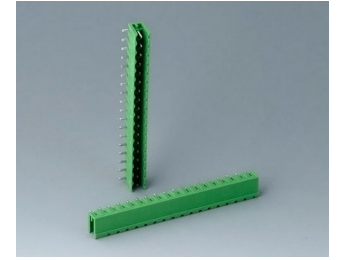
B6603222
 Plug header, block 5.08
 PA 6 (UL 94 V-0)



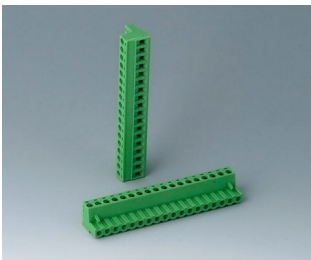
B6603223
 Plug header, block 5.08
 PA 6 (UL 94 V-0)



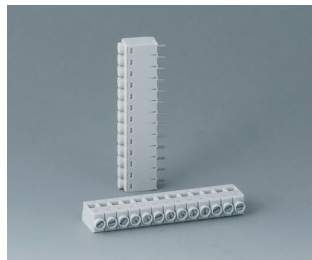
B6604111
 Terminal block, block 5.0
 PA 68 (UL 94 V-0)



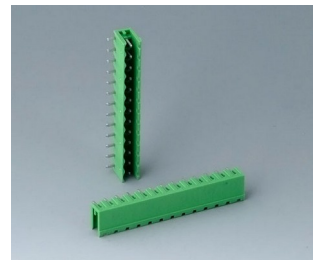
B6604222
 Plug header, block 5.08
 PA 68 (UL 94 V-0)



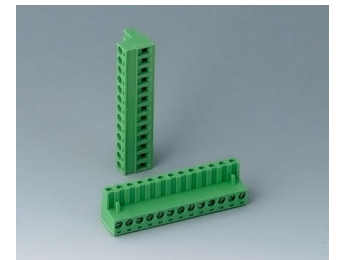
B6604223
 Plug header, block 5.08
 PA 68 (UL 94 V-0)



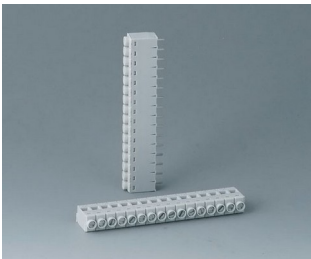
B6605111
 Terminal block, block 5.0
 PA 68 (UL 94 V-0)



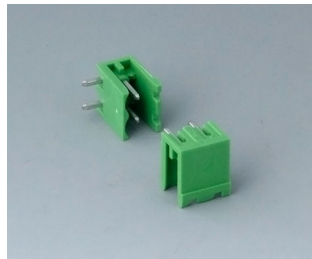
B6605222
 Plug header, block 5.08
 PA 6 (UL 94 V-0)



B6605223
 Plug header, block 5.08
 PA 6 (UL 94 V-0)



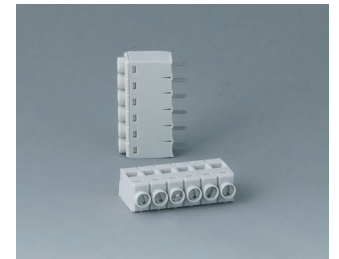
B6606111
 Terminal block, block 5.0
 PA 68 (UL 94 V-0)



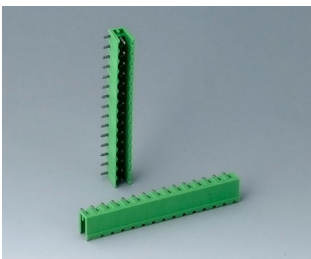
B6606222
 Plug header, block 5.08
 PA 6 (UL 94 V-0)



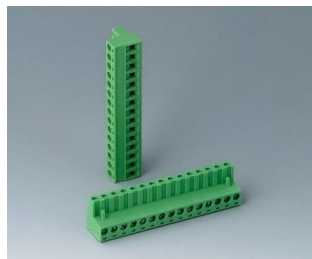
B6606223
 Plug header, block 5.08
 PA 6 (UL 94 V-0)



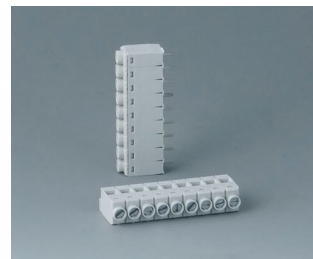
B6607111
 Terminal block, block 5.0
 PA 68 (UL 94 V-0)



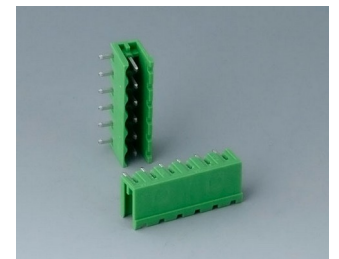
B6607222
 Plug header, block 5.08
 PA 6 (UL 94 V-0)



B6607223
 Plug header, block 5.08
 PA 6 (UL 94 V-0)

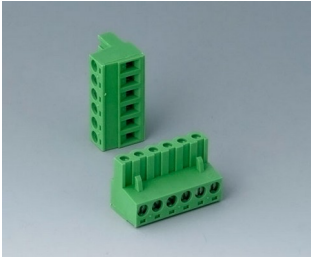


B6608111
 Terminal block, block 5.0
 PA 68 (UL 94 V-0)

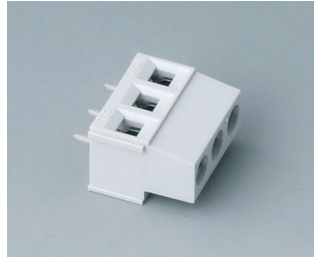


B6608222
 Plug header, block 5.08
 PA 68 (UL 94 V-0)

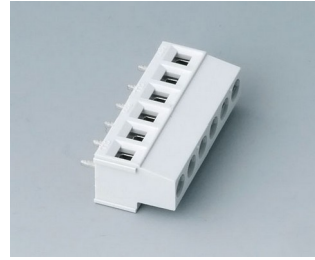
CONTACTS, CONNECTIONS



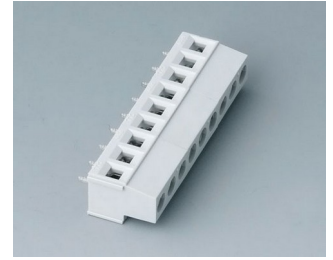
B6608223
Plug header, block 5.08
PA 68 (UL 94 V-0)



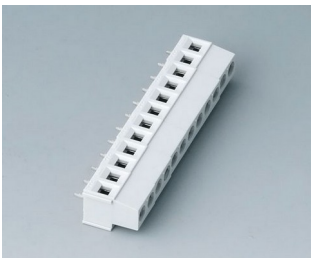
B6800650
Terminal block, block 5.08
PA 68 (UL 94 V-0)
light grey



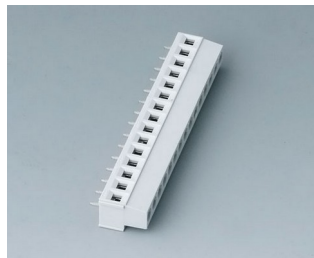
B6801650
Terminal block, block 5.08
PA 68 (UL 94 V-0)
light grey



B6802650
Terminal block, block 5.08
PA 68 (UL 94 V-0)
light grey

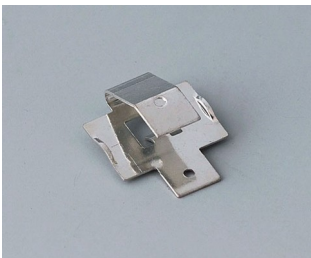


B6803650
Terminal block, block 5.08
PA 68 (UL 94 V-0)
light grey

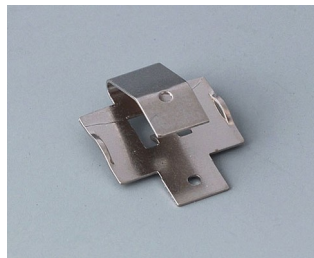


B6804650
Terminal block, block 5.08
PA 68 (UL 94 V-0)
light grey

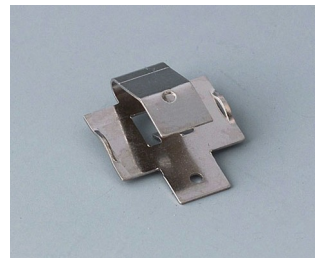
System components to complete



A9193004
Battery-clips, single contact
Steel
tin-plated



A9193006
Battery-clips, single contact
Steel
nickel-plated



A9193009
Battery clips, single contact
CuBe
nickel-plated



A9193011
Battery-clips, single contact
Steel
nickel-plated



A9193012
Battery-clips, single contact
Steel
nickel-plated

CONTACTS, CONNECTIONS

Accessory to complete



A9193031
Spring contact
gold-plated



A9193032
Spring contact

Accessory "battery"

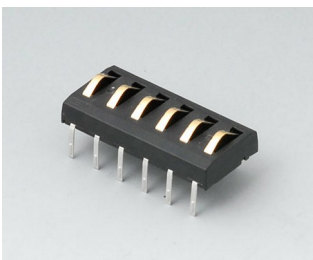


A9193033
Polarity reversal protection
device, positive terminal AA
ABS (UL 94 HB)
off-white RAL 9002

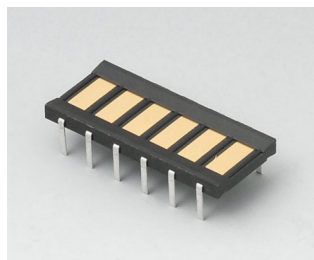


A9193034
Polarity reversal protection
device, positive terminal AAA
ABS (UL 94 HB)
off-white RAL 9002

Accessory



A9178007
Contacts, male
gold-plated



A9178008
Contacts, female
gold-plated

Subject to technical modification without notice. © by OKW Gehäusesysteme, Buchen/Germany.