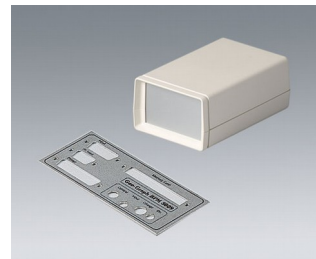
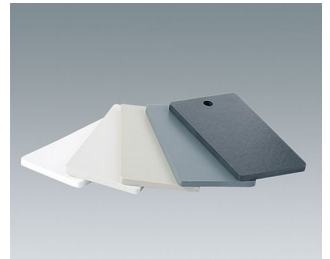
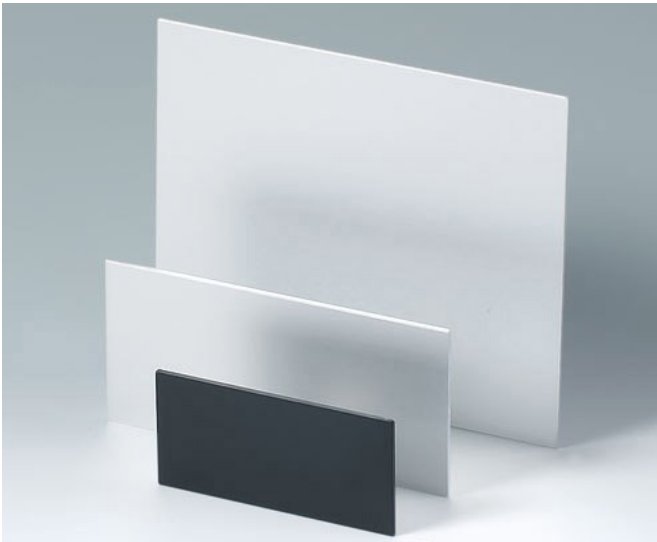


# PLASTIC AND ALUMINIUM PANELS

- panels made of polyamide, polystyrene and aluminium / panels made of anodised aluminium, each in different thicknesses (depending on the material)
- maximum blank size is 497 x 397 mm

The panels made of PA, PS or anodised aluminium are ideal as operating panels with/without electronics unit or special components. Anodised aluminium panels can be used, among other things, as front/rear panels or covers in the field of vision.



Subject to technical modification without notice. © by OKW Gehäusesysteme, Buchen/Germany.