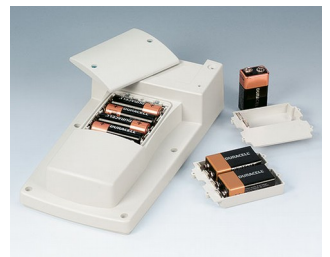


HAND-TERMINAL

Handheld enclosures for control systems in production and for outdoors

These tough, attractive and highly functional plastic enclosures are specifically designed for heavy duty handheld electronics equipments.

- impact resistant material
- robust with a high protection class up to IP 65 (sealing kit accessory)
- plenty of space for operating elements, displays, emergency stop switch, enable pushbuttons etc.
- ergonomic hand grip on underside, great to hold
- for control systems with cable connection or battery compartment 4 x AA, 1 x 9 V or 2 x 9 V cells
- optimum weight distribution
- recessed operating area for protecting the membrane keypad
- version I with closed top part
- version II for aluminium front panel assembly
- internal fastening pillars for PCBs



HAND-TERMINAL

Applications and Examples

- Flexible machine control systems in production and assembly
- Terminals for programming and teach-in applications
- Classic applications in the field of electrical engineering and electronics, e.g. measurement and control equipment
- Mobile terminals, programmers, data collection units and much more



Analysing water quality

Customising Options

What do you still need for your own very personal product? We can supply enclosures and tuning knobs with all necessary modifications for fitting your electronic components.
Customising options for Hand-Terminal



Machining



Lacquering



Printing



Laser marking



Decor foils



EMC shielding



Installation / Assembly
of accessories

HAND-TERMINAL

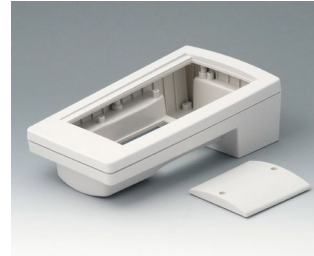
Select Versions



A9046107
HAND-TERMINAL M, Vers. I
PC+ABS (UL 94 V-0)
off-white RAL 9002
220x120x65mm
IP 65 opt.



A9046109
HAND-TERMINAL M, Vers. I
PC+ABS (UL 94 V-0)
black RAL 9005
220x120x65mm
IP 65 opt.

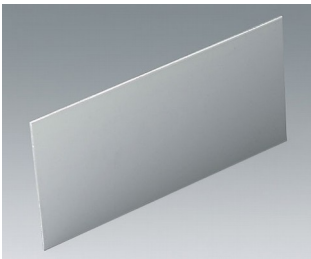


A9046207
HAND-TERMINAL M, Vers. II
PC+ABS (UL 94 V-0)
off-white RAL 9002
220x120x65mm
IP 65 opt.



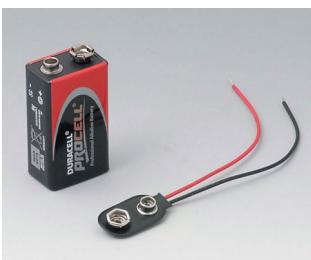
A9046209
HAND-TERMINAL M, Vers. II
PC+ABS (UL 94 V-0)
black RAL 9005
220x120x65mm
IP 65 opt.

Accessory to complete



A9146101
Front panel M
Aluminium
matt anodised
179x88x2mm

Accessory "battery"



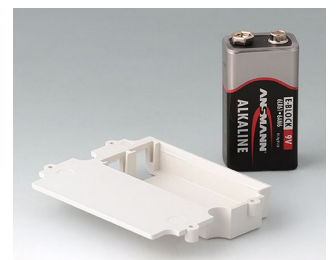
A9160003
Plug-in contact, 1 x 9 V (PP3)



A9161002
Set of battery clips, 2 x 9 V or 4 x AA
Steel
tin-plated



A9174002
Battery compartment, 2 x 9 V
ABS (UL 94 HB)
off-white RAL 9002



A9174003
Battery compartment, 1 x 9 V
ABS (UL 94 HB)
off-white RAL 9002

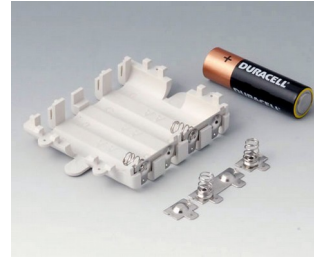
HAND-TERMINAL



A9174006
Set of battery clips, 1 x 9 V
Steel
tin-plated

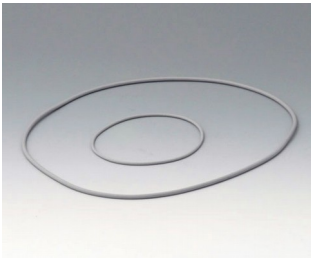


A9250250
Battery spacer
PE foam
50x25x4mm

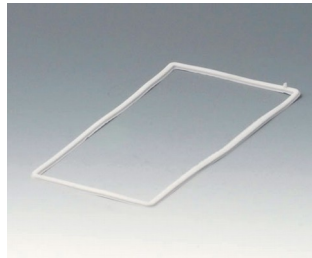


A9345217
Set of battery compartment, 4 x
AA
ABS (UL 94 HB)
off-white RAL 9002

Accessory "protection"



A9146106
Sealing kit M



A9146206
Sealing M

Accessory "screws"



A0306031
Self-tapping screws 3 x 6 mm
(PZ1)



A0308031
Self-tapping screws 3 x 8 mm
(PZ1)



A0308132
Self-tapping screw 3 x 8 mm
(T10)
Stainless steel

Subject to technical modification without notice. © by OKW Gehäusesysteme, Buchen/Germany.